

DAYCO®

POWER
plus

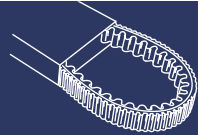
POWER *plus* IN KEVLAR

la nuova gamma di cinghie per lo scooter
the new belts range for scooters

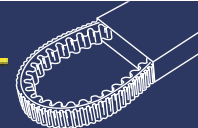
potenza
power

resistenza
resistance

affidabilità
reliability

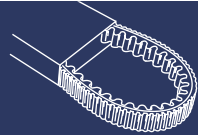


| Marka i model - Trademark model | | DAYCO Original tip Original type | Linea Dayco Original tip Original type | DAYCO Racing Power Plus | RMS Original tip Original Type | Originalni kod Original code |
|------------------------------------|---------------------|--|--|-------------------------------|--------------------------------------|---------------------------------|
| APRILIA | | | | | | |
| 50 cc | | | | | | |
| Amico Lk-Lx-GL-Sport | 92/99 | 16 375 0080 | 16 375 0089 | 16 375 0082 | 16 375 0081 | 8206109 |
| Area 51 | MPC 119,00 kn 98-00 | 16 375 0080 | 16 375 0089 | 16 375 0082 | 16 375 0081 | 8206109 |
| Gulliver Air-Lc | 95-00 | 16 375 0080 | 16 375 0089 | 16 375 0082 | 16 375 0081 | 8206109 |
| Habana - Custom | MPC 179,00 kn 99-02 | 16 375 0320 | | | | 2MCA000014 |
| Mojito Custom | 99-03 | 16 375 0320 | | | | 2MCA000014 |
| Mojito Retro' | 99/03 | 16 375 0320 | | | | 2MCA000014 |
| Rally Air-Lc | 95-00 | 16 375 0080 | 16 375 0089 | 16 375 0082 | 16 375 0081 | 8206109 |
| Scarabeo 2t | 93-01 | 16 375 0080 | 16 375 0089 | 16 375 0082 | 16 375 0081 | 8206109 |
| Scarabeo Di-Tech | 01-> | 16 375 0320 | | | | 2MCA000014 |
| Scarabeo 4t | 03-> | 16 375 0060 | 16 375 0069 | | | 8570076 |
| Sonic-Gp Lc | 99-00 | 16 375 0670 | | | | 8206818 |
| Sr-Lc-Urban-Viper-Replica | 93-96 | 16 375 0080 | 16 375 0089 | 16 375 0082 | 16 375 0081 | 8206109 |
| Sr Stealth-Netscaper | 97-99 | 16 375 0080 | 16 375 0089 | 16 375 0082 | 16 375 0081 | 8206109 |
| Sr www-Racing-Sport-Mot.Minar elli | 97-02 | 16 375 0080 | 16 375 0089 | 16 375 0082 | 16 375 0081 | 8206109 |
| Sr Di-Tech-Mot. Morini | 00-03 | 16 375 0320 | | | | 2MCA000014 |
| Sr H20 Racing-Sport-Mot.Morini | 00-02 | 16 375 0320 | | | | 2MCA000014 |
| Sr R Carb.Iniez.Mot.Piaggio | MPC 159,00 kn 03-> | 16 375 0250 | 16 375 0259 | 16 375 0252 | | 8515062-110 |
| Sr R-R Factory-Mot.Piaggio | 05-> | 16 375 0250 | 16 375 0259 | 16 375 0252 | | 8515062-110 |
| Sr Factory - Mot.Aprilia | 05-> | 16 375 0320 | | | | 2MCA000014 |
| 100 cc | | | | | | |
| Scarabeo 2T | 00-01 | 16 375 0620 | | | | 8510802 |
| Scarabeo 4T | 01-05 | | | 16 375 0630 | | 8551053 |
| Scarabeo 4T Restyling | 06-07 | | | 16 375 0630 | | 8551053/82646R |
| 125 cc | | | | | | |
| Atlantic | MPC 249,00 kn 02-05 | | 16 375 0389 | 16 375 0380 | | 8580200-247-841213 |
| Atlantic Eu.3 | 06-> | | 16 375 0389 | 16 375 0380 | | 8580247/841213 |
| Habana-Custom | 99-02 | 16 375 0260 | | | | 8550363 |
| Mojito Retro' Custom | 99-01 | 16 375 0260 | | | | 2MCA000014 |
| SR | 99-> | | | 16 375 0300 | | 8550130 |
| 125-150 cc | | | | | | |
| Leonardo Mot.Rotax | 96-03 | | | 16 375 0580 | | 280100-102 |
| Mojito | 03-05 | | | 16 375 0380 | | 8580247 |
| Scarabeo -Gt Mot.Rotax | 99-03 | | | 16 375 0580 | | 280102 |
| Scarabeo -Gt Mot.Piaggio | 03-> | | | 16 375 0600 | | 8575028-042 |
| Sport City | 04-> | | | 16 375 0600 | | 8575042 |
| Sr | 99-> | | | 16 375 0300 | | 8550130/434812 |
| 200 cc | | | | | | |
| Atlantic | MPC 469,00 kn 02-05 | | 16 375 0669 | 16 375 0660 | | 8580207-246-840903 |
| Scarabeo-GT Mot.Piaggio | 03-> | | | 16 375 0690 | | 8575029-041-842011 |
| Scarabeo -Gt Mot.Rotax | 99-03 | | | 16 375 0580 | | 280102 |
| Sport City | 04-> | | | 16 375 0690 | | 8575041-842011 |
| 250 cc | | | | | | |
| Atlantic - Atlantic Eu.3 | 05-06 | | | 16 375 0810 | | 8580261/843963 |
| Scarabeo | 04-> | | | 16 375 0790 | | 8577059 |
| Sport City | 06-> | | | 16 375 0790 | | 8577059/841851 |
| Leonardo | MPC 409,00 kn 99-> | | 16 375 0659 | 16 375 0650 | | 8122639 |
| 300 cc | | | | | | |
| Leonardo | 04-> | | | 16 375 0560 | | |
| 400-500 cc | | | | | | |
| Atlantic Sprint | MPC 659,00 kn 05-07 | | | 16 375 0680 | | 8560188/832738 |
| Scarabeo Light | 06-07 | | | 16 375 0680 | | 8560188/832738 |
| 500 cc | | | | | | |
| Atlantic | 01-02 | | | 16 375 0760 | | 8560070 |
| Atlantic-Sprint | 03-> | | | 16 375 0680 | | 8560188 |
| Scarabeo | 02-> | | | 16 375 0680 | | 8560188 |
| ATALA | | | | | | |
| 50 cc | | | | | | |
| Hacker | | 16 375 0120 | | | | |



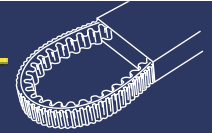
Marka i model - Trademark model

| | | DAYCO | Linea Dayco | DAYCO | RMS | |
|---|---------------------|-------------------------------|-------------------------------|----------------------|-------------------------------|---------------------------------|
| | | Original tip Original type | Original tip Original type | Racing Power Plus | Original tip Original Type | Originalni kod Original code |
| BSV | | | | | | |
| 50 cc | | | | | | |
| Ax Gz | | 16 375 0110 | | | | |
| Sp Dio | | 16 375 0130 | | | | |
| Gp Dio Zx | MPC 159,00 kn | 16 375 0210 | | | | |
| BENELLI | | | | | | |
| 50 cc | | | | | | |
| Naked Mot.Minarelli | MPC 119,00 kn 02 | 16 375 0080 | 16 375 0089 | 16 375 0082 | 16 375 0081 | R16140011AO |
| 491 Gt-Rr-St-Sp-Mot.Minarelli | 97-02 | 16 375 0080 | 16 375 0089 | 16 375 0082 | 16 375 0081 | R16140011AO |
| 491 Sport-Racing-Mot.Minarelli | 98-02 | 16 375 0080 | 16 375 0089 | 16 375 0082 | 16 375 0081 | R16140011AO |
| K2 Air-Lc-Namur mot.Minarelli | 98-> | 16 375 0080 | 16 375 0089 | 16 375 0082 | 16 375 0081 | R16140011AO |
| Pepe-LX Mot.Minarelli | 98-> | 16 375 0080 | 16 375 0089 | 16 375 0082 | 16 375 0081 | R16140011AO |
| 125-150 cc | | | | | | |
| Adiva | MPC 249,00 kn 01-> | | 16 375 0389 | 16 375 0380 | | R13440941AO |
| Velvet-Touring | 99-> | | | 16 375 0300 | | R16140631AO |
| 250 cc | | | | | | |
| Velvet-Touring | MPC 409,00 kn 98-> | | 16 375 0659 | 16 375 0650 | | R16040171AO |
| BETAMOTOR | | | | | | |
| 50 cc | | | | | | |
| Tempo 13" 94-95 - 16" | MPC 119,00 kn 96-> | 16 375 0080 | 16 375 0089 | 16 375 0082 | 16 375 0081 | 33-01290 |
| Quadra-Chrono 502 | 96-> | 16 375 0080 | 16 375 0089 | 16 375 0082 | 16 375 0081 | 33-01290 |
| Ark-Ark Lc-K | 96-> | 16 375 0080 | 16 375 0089 | 16 375 0082 | 16 375 0081 | 33-01290 |
| Eikon | 99-> | 16 375 0080 | 16 375 0089 | 16 375 0082 | 16 375 0081 | 33-01290 |
| 125-150 cc | | | | | | |
| Eikon | 99-> | | | 16 375 0580 | | 36-10750 |
| BMW | | | | | | |
| 125-200 cc | | | | | | |
| C1 | 00-> | | | 16 375 0580 | | |
| DERBI | | | | | | |
| 50 cc | | | | | | |
| Aventura-Superboy-Variant Revolution | | 16 375 0510 | | | | 00F02600371 |
| Hunter Paddock Predator | 99-> | 16 375 0180 | | | | |
| Vamos | | 16 375 0170 | | | | |
| Atlantis-Lc | | 16 375 0360 | | | | |
| Atlantis -Bullet-Red-City-Two City- Mot.Piaggio | 02-05 | 16 375 0250 | 16 375 0259 | 16 375 0252 | | 436864 |
| Hunter | 96-97 | 16 375 0520 | | | | 00G02602371 |
| Gp1 -Euro 2 | MPC 159,00 kn 01-05 | 16 375 0250 | 16 375 0259 | 16 375 0252 | | 436864 |
| Paddock - Predator | 98-99 | 16 375 0520 | | | | 00G02602371 |
| Predator 02-Lc - 98-01 | | 16 375 0360 | | | | |
| 100 cc | | | | | | |
| Atlantis | | 16 375 0370 | | | | 00602606371 |
| 125 cc | | | | | | |
| Gp1 E2 | 06-> | | 16 375 0389 | 16 375 0380 | | 841213 |
| 125-150 cc | | | | | | |
| Boulevard | 02-05 | | 16 375 0389 | 16 375 0380 | | 832023 |
| 200 cc | | | | | | |
| Boulevard | MPC 469,00 kn 05-> | | 16 375 0669 | 16 375 0660 | | 840908 |
| 250 cc | | | | | | |
| Gp1 | 06-> | | | 16 375 0810 | | 843963 |
| GARELLI | | | | | | |
| 50 cc | | | | | | |
| Pony | | 16 375 0090 | | | | |
| Big Well - Racing Sr | | 16 375 0110 | | | | |



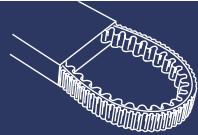
Marka i model - Trademark model

| | | | DAYCO Original tip Original type | Linea Dayco Original tip Original type | DAYCO Racing Power Plus | RMS Original tip Original Type | Originalni kod Original code |
|---|---------------|-------------|--|--|-------------------------------|--------------------------------------|---------------------------------|
| GILERA | | | | | | | |
| 50 cc | | | | | | | |
| Dna-Gp-Experience | | 00-06 | 16 375 0060 | 16 375 0069 | | | 82712R |
| Easy Moving | MPC 119,00 kn | 95/96 | 16 375 0040 | 16 375 0049 | 16 375 0042 | | 431190 |
| Ice | MPC 159,00 kn | 01-05 | 16 375 0250 | 16 735 0259 | 16 375 0252 | | 436864 |
| Runner FL | | 02 | 16 375 0250 | | | | 436864 |
| Runner - Poggiali | | 02 | 16 375 0250 | 16 375 0259 | 16 375 0252 | | 436864 |
| Runner Sp - Race | | 02-06 | 16 375 0250 | 16 375 0259 | 16 375 0252 | | 436864 |
| Runner Purejet | | 02-04 | 16 375 0250 | 16 375 0259 | 16 375 0252 | | 436864 |
| Runner | | 97-00 | 16 375 0250 | 16 375 0259 | 16 375 0252 | | 436864 |
| Runner Purejet | MPC 219,00 kn | 05-06 | 16 375 0850 | | | | 833982 |
| Runner Purejet Race | | 06 | 16 375 0850 | | | | 833982 |
| Stalker | | 97-06 | 16 375 0250 | 16 375 0259 | 16 375 0252 | | 436864 |
| Storm | MPC 149,00 kn | 94-95 | 16 375 0010 | 16 375 0019 | 16 375 0012 | | 430728 |
| Typhoon | | 94-97 | 16 375 0010 | 16 375 0019 | 16 375 0012 | | 430728 |
| Typhoon Xr | | 00 | 16 375 0250 | 16 375 0259 | 16 375 0252 | | 436864 |
| Typhoon X | | 98-99 | 16 375 0010 | 16 375 0019 | 16 375 0012 | | 430728 |
| 80 cc | | | | | | | |
| Typhoon | | | 16 375 0020 | | | | 431190 |
| 125 cc | | | | | | | |
| Dna Kevlar | MPC 249,00 kn | 01 | | 16 375 0389 | 16 375 0380 | | 841213 |
| Runner - Vx- Vx4T- Sc- Race | | 00-07 | | 16 375 0389 | 16 375 0380 | | 841213 |
| Runner Fx | MPC 269,00 kn | 97-02 | 16 375 0190 | | | | 434812 |
| Typhoon | | 95-98 | 16 375 0190 | | | | 434812 |
| Typhoon X-Xr | | 99-00 | 16 375 0190 | | | | 434812 |
| 180 cc | | | | | | | |
| Dna | MPC 469,00 kn | 01 | | 16 375 0669 | 16 375 0660 | | 840908 |
| Runner Vxr | | 00-01 | | 16 375 0669 | 16 375 0660 | | 840908 |
| Runner Fxr | | 97-00 | | | 16 375 0200 | | 484497 |
| 200 cc | | | | | | | |
| Runner Vxr - Race | | 02-06 | | 16 375 0669 | 16 375 0660 | | 840908 |
| Runner Vxr - Vxr 4T-Race | | 05-06 02-04 | | 16 375 0669 | 16 375 0660 | | 840908 |
| 400 cc | | | | | | | |
| Fuoco (3 Kotača) | MPC 659,00 kn | | | | 16 375 0680 | | |
| 500 cc | | | | | | | |
| Nexus | | 03-05 | | | 16 375 0680 | | 832738 |
| Nexus Euro 3 - Sp Euro 3 | | 06-07 | | | 16 375 0680 | | 846741 |
| HSC | | | | | | | |
| 50 cc | | | | | | | |
| Sc | MPC 159,00 kn | 01 | 16 375 0130 | | | | |
| Sc - L - Zx | | 01 | 16 375 0210 | | | | |
| HONDA | | | | | | | |
| 50 cc | | | | | | | |
| Dio - Vision - St | | | 16 375 0130 | | | | |
| Dio - Dj | | | 16 375 0210 | | | | |
| Lead | MPC 149,00 | | 16 375 0140 | | | 16 375 0141 | |
| Sj Bali - Sfx - S - Sv - Sxr W - Srx Shadow | | 95-98 | 16 375 0150 | | | | |
| Sh 1° serie> | | 95 | 16 375 0230 | | | | |
| Sh - Sky - X8r | MPC 139,00 kn | 96> | | | | 16 375 0431 | 23100GBY901 |
| 125 cc | | | | | | | |
| Chiocciola - Sh - Phanteon 4T - Dylan | MPC 269,00 kn | | 16 375 0470 | 16 375 0479 | | | 23100KGF9010 |
| Phanteon 2T | | | | | 16 375 0310 | | 23100KFF900 |
| 150 cc | | | | | | | |
| Sh - Chiocciola - Dylan - Phanteon 4T | | | 16 375 0730 | 16 375 0739 | | | 23100KGG911 |
| Phanteon 2T | | | | | 16 375 0310 | | 23100KFF900 |
| 250 cc | | | | | | | |
| Cn - Helix - Spazio | | 95-99 | | 16 375 0289 | 16 375 0280 | | 23100KM1671 |
| Foresight - Jazz | | | | | 16 375 0780 | | 23100KFG641/003 |
| 400 cc | | | | | | | |
| Silver Wing | | 06 | | | 16 375 0890 | | 23100-MEF003-8205K |



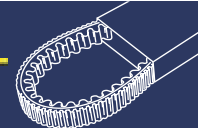
Marka i model - Trademark model

| ITALJET | | DAYCO | Linea Dayco | DAYCO | RMS | Originalni kod |
|---------------------------------|---------------------|---------------------------------|---------------------------------|----------------------|---------------------------------|---------------------------------|
| Originalni tip Original type | | Originalni tip Original type | Originalni tip Original type | Racing Power Plus | Originalni tip Original Type | Originalni kod Original code |
| 50 cc | | | | | | |
| Pista 1-Bazooka 1/2 Reporter | | 16 375 0090 | | | 16 375 0091 | 9511190 |
| Pista 2 Scoop 2/3 Yankee | MPC 119,00 kn 92-93 | 16 375 0080 | 16 375 0089 | 16 375 0082 | 16 375 0081 | 3351015 |
| Jet Set | MPC 159,00 kn 02-> | 16 375 0250 | 16 375 0259 | 16 375 0252 | | 210436864 |
| Torpedo 2T - (Mot.Morini) | 97-00 | 16 375 0120 | | | | 338127227 |
| Torpedo 2T (Mot.Piaggio) | MPC 189,00 kn 01-03 | 16 375 0050 | | 16 375 0052 | | 210480852 |
| Torpedo 4T | 02-> | 16 375 0050 | | 16 375 0052 | | 210480852 |
| Formula Air-Lc | 94-> | 16 375 0120 | | | | 338127227 |
| Velocifero | 93-> | 16 375 0170 | | | | 337127204 |
| 125 cc | | | | | | |
| Formula | | | | 16 375 0240 | | 340127261 |
| Dragster | 99-> | 16 375 0190 | | | | 210434812 |
| Torpedo | 99-00 | 16 375 0260 | | | | 210825059 |
| 125-150 cc | | | | | | |
| Millenium | 00-> | | | 16 375 0300 | | 4871702090 |
| Jet Set | MPC 249,00 kn 01-> | | 16 375 0389 | 16 375 0380 | | 210487170 |
| Jupiter | 02-> | | | 16 375 0300 | | 4871702090 |
| Torpedo Mot.Leader | 00-01 | | 16 375 0389 | 16 375 0380 | | 210487170 |
| 180 cc | | | | | | |
| Dragster | 99-> | | | 16 375 0200 | | 210484497 |
| 250 cc | | | | | | |
| Jupiter | MPC 409,00 kn 01-> | | 16 375 0659 | 16 375 0650 | | 4711702092 |
| KYMCO | | | | | | |
| 50 cc | | | | | | |
| Agility 4T | MPC 189,00 kn 05-> | 16 375 0330 | | 16 375 0332 | | 00107541 |
| Agility 4T R10 | MPC 159,00 kn 06 | 16 375 0210 | | | | 00107006 |
| Bet & Win-Euro 2 | 02-> | 16 375 0330 | | 16 375 0332 | | 00107541 |
| Cx 93-> Cx Super | 94-97 | 16 375 0210 | | | | 00107006 |
| Dink-Lc-Classic-Euro 2 | 99-> | 16 375 0330 | | 16 375 0332 | | 00107541 |
| Djw-X-Y-Rst | 91-99 | 16 375 0210 | | | | 00107006 |
| Filly 4T | 98-00 | 16 375 0210 | | | | 00107206 |
| Heroism | 95-97 | 16 375 0210 | | | | 00107206 |
| Maxxer | 05 | 16 375 0210 | | | | 00107006 |
| Mxer Euro 2 | 04 | 16 375 0210 | | | | 00107006 |
| Mxer | 02-03 | 16 375 0210 | | | | 00107006 |
| Mxu | 06-07 | 16 375 0210 | | | | 00107006 |
| Mxu Sr | 06 | 16 375 0210 | | | | 00107006 |
| People-Euro 2 - S | 99-05 | 16 375 0330 | | 16 375 0332 | | 00107541 |
| People S 4T | 06 | 16 375 0330 | | 16 375 0332 | | 00307541 |
| Super-9-Sport Euro 2 | 00-> | 16 375 0330 | | 16 375 0332 | | 00107541 |
| Sniper Dt 93-> - Dd | 94-> | 16 375 0210 | | | | 00107206 |
| Topboy | 97-> | 16 375 0330 | | 16 375 0332 | | 00107541 |
| Vitality 2T-4T | 04-> | 16 375 0330 | | 16 375 0332 | | 00107541 |
| Kxr | 04 | 16 375 0210 | | | | 00107006 |
| Yup-Euro 2 | 02-> | 16 375 0330 | | 16 375 0332 | | 00107541 |
| 125 cc | | | | | | |
| Agility Euro 3 | 06-07 | | | 16 375 0550 | 16 375 0441 | 00127541 |
| Agility | 06 | | | 16 375 0550 | 16 375 0441 | 00127541 |
| Dink Euro 3 | 06-07 | | | 16 375 0580 | | 00127985 |
| Movie | 98-00 | | | 16 375 0490 | | 00127785 |
| People S | 05-> | | | 16 375 0550 | 16 375 0441 | 00127541 |



Marka i model - Trademark model

| Marka i model - Trademark model | | DAYCO Originalni tip Original type | Linea Dayco Originalni tip Original type | DAYCO Racing Power Plus | RAS Originalni tip Original Type | Originalni tip Original code |
|----------------------------------|---------------------|--|--|-------------------------------|--|---------------------------------|
| KYMCO (nastavak) | | | | | | |
| 125-150 cc | | | | | | |
| B&W-Euro 2 | 01-> | | | 16 375 0580 | | 00127985 |
| Dink-Lx | 97-> | | | 16 375 0580 | | 00127985 |
| Dink Classic-Euro 2 | 02-> | | | 16 375 0580 | | 00127985 |
| Grand Dink-Euro 2 | 02-> | | | 16 375 0580 | | 00127985 |
| Heroism 95-> | | | | 16 375 0490 | | 00127785 |
| Movie Euro 3 | 06-07 | | | 16 375 0550 | 16 375 0441 | 00127541 |
| Movie XL- 01-> - Euro 2 | 03-04 | | | 16 375 0550 | 16 375 0441 | 00127541 |
| People-Euro 2 | 99-04 | | | 16 375 0550 | 16 375 0441 | 00127541 |
| Vivio | 00 | | | 16 375 0490 | | 00127785 |
| 200 cc | | | | | | |
| People S | 05-> | | | 16 375 0550 | | 00127542 |
| 250 cc. | | | | | | |
| Bet & Win - Euro 2 | 01-03 | | | 16 375 0720 | | 00127998 |
| Gran Dink - Eu 2 | 02-03 | | | 16 375 0720 | | 00127998 |
| People | 03-> | | | 16 375 0820 | | 00127543 |
| Peolpe S | 06 | | | 16 375 0820 | | 00127543 |
| X-Citing | 05-> | | | 16 375 0820 | | 00127543 |
| Yup | 03-> | | | 16 375 0720 | | 00127998 |
| Quad. Kxr - 03-04- Mxu | 05 | | | 16 375 0720 | | 00127998 |
| 300 cc | | | | | | |
| Maxxer | 05-06 | | | 16 375 0720 | | 00127998 |
| Mxu | 05-06 | | | 16 375 0720 | | 00127998 |
| 500 cc | | | | | | |
| X Citing | 05 | | | 16 375 0880 | | 00127038 |
| X Citing | 06-07 | | | 16 375 0880 | | 00127038 |
| LEM | | | | | | |
| 50 cc | | | | | | |
| Flash - ghibli - tornado | | 16 375 0090 | | | 16 375 0091 | |
| MALAGUTI | | | | | | |
| 50 cc | | | | | | |
| Ciak Mono Euro 2-2.2.3. | 03 | 16 375 0080 | 16 375 0089 | 16 375 0082 | 16 375 0081 | 71700500 |
| Ciak Master 4T | MPC 189,00 kn 05-06 | 16 375 0050 | | 16 375 0052 | | 41701400 |
| Ciak master Euro 2 | 04-06 | 16 375 0080 | 16 375 0089 | 16 375 0082 | 16 375 0081 | 71701000 |
| Ciak Td | 00-01 | 16 375 0080 | 16 375 0089 | 16 375 0082 | 16 375 0081 | 71700500 |
| Ciak | MPC 119,00 kn 99-00 | 16 375 0080 | 16 375 0089 | 16 375 0082 | 16 375 0081 | 71700500 |
| Centro SL | 94-98 | 16 375 0080 | 16 375 0089 | 16 375 0082 | 16 375 0081 | 71700300 |
| Centro base | 93-94 | 16 375 0080 | 16 375 0089 | 16 375 0082 | 16 375 0081 | 71700300 |
| Centro SL Kat | 99-00 | 16 375 0080 | 16 375 0089 | 16 375 0082 | 16 375 0081 | 71700300 |
| Crosser Cr1 | 95-98 | 16 375 0120 | | | | 60323800 |
| F10 Restyling Euro 2-2.3. | 03-04 | 16 375 0110 | | | | 71700100-600 |
| F10 Jet Line | 92-98 | 16 375 0110 | | | | 71700100-600 |
| F10 Restyling Euro 1 | 01-02 | 16 375 0110 | | | | 71700100-600 |
| F10 Kat | 99-00 | 16 375 0110 | | | | 71700100-600 |
| F10 Reastyling Euro 2 | 02-06 | 16 375 0110 | | | | 71701300 |
| F12 Phantom Restyling Euro 2-2.3 | 03-04 | 16 375 0080 | 16 375 0089 | 16 375 0082 | 16 375 0081 | 71700300 |
| F12 " Lc " Euro 2-2.3 | 03-04 | 16 375 0080 | 16 375 0089 | 16 375 0082 | 16 375 0081 | 71700300 |
| F12 " Restyling Euro 2 | 02-06 | 16 375 0080 | 16 375 0089 | 16 375 0082 | 16 375 0081 | 71700300 |
| F12 " Lc " | 02 | 16 375 0080 | 16 375 0089 | 16 375 0082 | 16 375 0081 | 71700300 |
| F12 Phantom Lc - aria | 94-98 | 16 375 0080 | 16 375 0089 | 16 375 0082 | 16 375 0081 | 71700300 |
| F12 " Lc Restyling Euro 1 | 01-02 | 16 375 0080 | 16 375 0089 | 16 375 0082 | 16 375 0081 | 71700300 |
| F12 Phantom Restyling Euro 1 | 01-02 | 16 375 0080 | 16 375 0089 | 16 375 0082 | 16 375 0081 | 71700300 |



Marka i model - Trademark model

MALAGUTI (nastavak)

50 cc

| Model | Year | Originalni tip Original type | Linea Dayco Originalni tip Original type | DAYCO Racing Power Plus | RMS Originalni tip Original Type | Originalni kod Original code |
|-----------------------------------|-------|---------------------------------|--|-------------------------------|--|---------------------------------|
| F12 Phantom Lc Twin Disks | 98 | 16 375 0080 | 16 375 0089 | 16 375 0082 | 16 375 0081 | 71700300 |
| F12 Phantom Euro 1 - Lc aria | 99-00 | 16 375 0080 | 16 375 0089 | 16 375 0082 | 16 375 0081 | 71700300 |
| F12 Phantom Lc Restyling Euro 2 | 06 | 16 375 0080 | 16 375 0089 | 16 375 0082 | 16 375 0081 | 71701000 |
| F15 Lc-Tds Restyling Euro 1 | 01 | 16 375 0080 | 16 375 0089 | 16 375 0082 | 16 375 0081 | 71700300 |
| F15 Fire Fox Restyling Euro 2-2.3 | 03-04 | 16 375 0080 | 16 375 0089 | 16 375 0082 | 16 375 0081 | 71700300 |
| F15 Fire Fox Euro 2 | 02-03 | 16 375 0080 | 16 375 0089 | 16 375 0082 | 16 375 0081 | 71700300 |
| F15 Fire Fox Air Cooled | 05-06 | 16 375 0080 | 16 375 0089 | 16 375 0082 | 16 375 0081 | 71701000 |
| F15 Lc Restyling Euro 2 | 04-05 | 16 375 0080 | 16 375 0089 | 16 375 0082 | 16 375 0081 | 71701000 |
| F15 Fire Fox | 94-98 | 16 375 0080 | 16 375 0089 | 16 375 0082 | 16 375 0081 | 71700300 |
| F15 Fire Fox Twin Disk e Special | 98-99 | 16 375 0080 | 16 375 0089 | 16 375 0082 | 16 375 0081 | 71700300 |
| F15 Fire Fox Twin Disk Digit Kat | 98-00 | 16 375 0080 | 16 375 0089 | 16 375 0082 | 16 375 0081 | 71700300 |
| Grizzly 4 Wheels | 04-05 | 16 375 0110 | | | | 71700100/71700600 |
| Yesterday - Yesterday Euro | 97-00 | 16 375 0110 | | | | 71700100-600 |

MPC 119,00 kn

100 cc

| | | | | | | |
|--------------------|-------|--|--|-------------|--|----------|
| F12 Phantom - Ciak | 99-00 | | | 16 375 0390 | | 60330200 |
|--------------------|-------|--|--|-------------|--|----------|

125 cc

| | | | | | | |
|--------------------------|-------|--|-------------|-------------|--|--------------|
| Ciak Restyling Euro 2 | 03 | | | 16 375 0550 | | 51700600 |
| Ciak Master | 04 | | | 16 375 0550 | | 51700600 |
| Ciak Master Euro 3 | 06 | | | 16 375 0550 | | 51700600 |
| Ciak 125 | 00-01 | | | 16 375 0550 | | 51700600 |
| F 18 Warrior | 00-02 | | | 16 375 0580 | | 51700300 |
| Phantom Max | 03 | | | 16 375 0300 | | 71700900 |
| Madison Restyling Euro 2 | 03-04 | | | 16 375 0300 | | 71700700 |
| Madison Restyling | 02 | | | 16 375 0300 | | 71700700 |
| Madison 3 | 06 | | 16 375 0389 | 16 375 0380 | | 41701500 |
| Madison | 99-01 | | | 16 375 0300 | | 71700700/900 |

MPC 249,00 kn

150 cc

| | | | | | | |
|-----------------------|-------|--|--|-------------|--|----------|
| Ciak Restyling Euro 2 | 03 | | | 16 375 0550 | | 51700600 |
| Ciak Master | 04 | | | 16 375 0550 | | 51700600 |
| Ciak | 00-02 | | | 16 375 0550 | | 51700600 |
| F 18 Warrior | 00-02 | | | 16 375 0580 | | 51700300 |
| Madison T. | 99-01 | | | 16 375 0300 | | 71700700 |

180 cc.

| | | | | | | |
|------------|-------|--|-------------|-------------|--|--------------|
| Madison R. | 01-02 | | 16 375 0669 | 16 375 0660 | | 41700300/700 |
|------------|-------|--|-------------|-------------|--|--------------|

200 cc.

| | | | | | | |
|-----------------------------|----|--|-------------|-------------|--|--------------|
| Ciak Master Euro 2 | 06 | | | 16 375 0550 | | 51700700 |
| Madison S. Restyling | 02 | | 16 375 0669 | 16 375 0660 | | 41700300/700 |
| Madison S. Restyling Euro 2 | 03 | | 16 375 0669 | 16 375 0660 | | 41700700 |
| Phantom Max | 03 | | 16 375 0669 | 16 375 0660 | | 41700700 |

MPC 469,00 kn

250 cc

| | | | | | | |
|--------------------------|-------|--|-------------|-------------|--|----------|
| Madison 3 | 06 | | | 16 375 0810 | | 41700900 |
| Madison 3 | 06 | | | 16 375 0810 | | 41700900 |
| Madison RS Restyling | 04 | | | 16 375 0810 | | 41700900 |
| Madison S. | 99-01 | | 16 375 0659 | 16 375 0650 | | 91700200 |
| Phantom Max | 04 | | | 16 375 0810 | | 41700900 |
| Password - Password Eu 3 | 05-07 | | | 16 375 0560 | | 71701100 |

MPC 409,00 kn

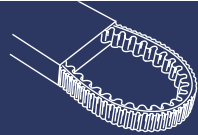
400 cc

| | | | | | | |
|----------------------|-------|--|--|-------------|--|----------|
| Madison K. Restyling | 02-04 | | | 16 375 0750 | | 60331600 |
| Madison K. | 02 | | | 16 375 0750 | | 60331600 |

500 cc

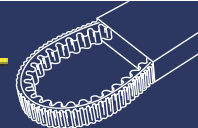
| | | | | | | |
|---------------------------|-------|--|--|-------------|--|----------|
| Spider Max Gt - Gt Euro 3 | 04-06 | | | 16 375 0680 | | 41701100 |
|---------------------------|-------|--|--|-------------|--|----------|

MPC 659,00 kn



Marka i model - Trademark model

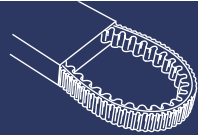
| | | DAYCO | Linea Dayco | DAYCO | RMS | |
|---|--------------------|---------------------------------|---------------------------------|----------------------|---------------------------------|---------------------------------|
| | | Originalni tip Original type | Originalni tip Original type | Racing Power Plus | Originalni tip Original Type | Originalni kod Original code |
| MBK | | | | | | |
| 50 cc | | | | | | |
| Booster-Road-Rocket-Track-Ng | 90-05 | 16 375 0080 | 16 375 0089 | 16 375 0082 | 16 375 0081 | 5RNE764100 |
| Booster-Spirit-L-R-Naked-Euro 2 | 95-05 | 16 375 0080 | 16 375 0089 | 16 375 0082 | 16 375 0081 | 5RNE764100 |
| Ct S-Ct SS-Sorriso - Active | 91-94 | 16 375 0090 | | | 16 375 0091 | 3Y1764100 |
| Ct SS New Sorriso | 95-96 | 16 375 0410 | | | | GF1764100 |
| Evolis - Fizz | 92-95 | 16 375 0110 | | | | 3WF1764100 |
| Flipper-Euro 2 | MPC 119,00 kn 98-> | 16 375 0080 | 16 375 0089 | 16 375 0082 | 16 375 0081 | 5RNE764100 |
| Forte | 94-96 | 16 375 0110 | | | | 3WF1764100 |
| Mach G-Euro 2 | 02-> | 16 375 0080 | 16 375 0089 | 16 375 0082 | 16 375 0081 | 5RNE764100 |
| Nitro-R-Euro 2 - Ovetto-Euro 2 | 97-> | 16 375 0080 | 16 375 0089 | 16 375 0082 | 16 375 0081 | 5RNE764100 |
| Stunt | 00-> | 16 375 0080 | 16 375 0089 | 16 375 0082 | 16 375 0081 | 5RNE764100 |
| Target | 91-95 | 16 375 0110 | | | | 3WF1764100 |
| 100 cc | | | | | | |
| Booster | 00-99-> | 16 375 0620 | | | | 4VP1764100 |
| 125 cc | | | | | | |
| XC Flame-R | 95-98 | 16 375 0530 | | | | 4CW1764102 |
| 125-150cc | | | | | | |
| Doodo | 00-> | | | 16 375 0300 | | 5DS1764100 |
| Thunder | 01-> | | | 16 375 0300 | | 5DS1764100 |
| Skyliner | 99-> | | | 16 375 0300 | | 5DS1764100 |
| 150 cc | | | | | | |
| XC Vertex | | | | 16 375 0400 | | 3UH1764100 |
| 180 cc | | | | | | |
| Skyliner | MPC 339,00 kn 03-> | | | 16 375 0570 | | 5XME764100 |
| 250 cc | | | | | | |
| Skyliner - Abs | MPC 409,00 kn 00-> | | 16 375 0659 | 16 375 0650 | | 5CG1764100 |
| 300 cc | | | | | | |
| Kilibre | 03-> | | | 16 375 0560 | | 5SEE764100 |
| PEUGEOT | | | | | | |
| 50 cc | | | | | | |
| Buxi-Rs | MPC 129,00 kn 94-> | 16 375 0160 | 16 375 0169 | 16 375 0162 | | 729171 |
| Elyseo | 97-> | 16 375 0160 | 16 375 0169 | 16 375 0162 | | 29171 |
| Elystar Tsdj - Jet Force | 03-> | 16 375 0160 | 16 375 0169 | 16 375 0162 | | 729171 |
| Looxor-Tdsj | MPC 149,00 kn 01-> | 16 375 0060 | 16 375 0069 | | | 742470 |
| Ludix 10 One-Trend-Snake - Ludix 14 Classic - Elegant | 04-> | 16 375 0160 | 16 375 0169 | 16 375 0162 | | 729171 |
| Metal X | 02-> | 16 375 0160 | 16 375 0169 | 16 375 0162 | | 729171 |
| SC Metropolis | MPC 149,00 kn 91-> | 16 375 0140 | | | 16 375 0141 | 706618 |
| Speedake - Speedfight zračno/kat - vodeno - Squab | 95-97 | 16 375 0160 | 16 375 0169 | 16 375 0162 | | 729171 |
| St Rapido-3 | 85-97 | 16 375 0130 | | | | 713334 |
| Sv Geo | 91-> | 16 375 0150 | | | | 723590 |
| Trekker-Road | 98-> | 16 375 0160 | 16 375 0169 | 16 375 0162 | | 729171 |
| X-Fight | 00-> | 16 375 0160 | 16 375 0169 | 16 375 0162 | | 729171 |
| X-Race | 03-> | 16 375 0160 | 16 375 0169 | 16 375 0162 | | 729171 |
| Vivacity - katalizator- specijalne serije | 97-> | 16 375 0160 | 16 375 0169 | 16 375 0162 | | 729171 |
| Zenith-Ln-Ls Luxe | 94-> | 16 375 0150 | | | | 723590 |
| 100 cc | | | | | | |
| Looxor | 01 | 16 375 0370 | | | | 742527 |
| 125 cc | | | | | | |
| JetForce | 03-> | | | 16 375 0420 | | 737830 |
| Elyseo | 99-> | | | 16 375 0420 | | 737830 |
| Elystar | 02-> | | | 16 375 0420 | | 737830 |
| Looxor | 03-> | | | 16 375 0400 | | 756528 |
| SV Geo | 91-95 | 16 375 0120 | | | | 724730 |
| 150 cc | | | | | | |
| Elyseo | 01-> | | | 16 375 0420 | | 737830 |
| Elystar | 02-> | | | 16 375 0420 | | 737830 |
| Looxor | 03-> | | | 16 375 0400 | | 756528 |
| 250 cc | | | | | | |
| SV | 01-> | | | 16 375 0780 | | 754984 |
| Geopolis | | | | 16 375 0790 | | |
| Satelis | | | | 16 375 0810 | | |
| 500 cc | | | | | | |
| Satelis | MPC 659,00 kn | | | 16 375 0680 | | |



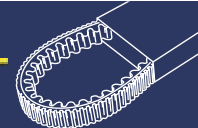
Marka i model - Trademark model

PIAGGIO - SCOOTER

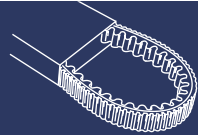
| | | | | DAYCO | Linea Dayco | DAYCO | RMS | |
|---|---------------|--------|--|---------------------------------|---------------------------------|----------------------|---------------------------------|---------------------------------|
| | | | | Originalni tip Original type | Originalni tip Original type | Racing Power Plus | Originalni tip Original Type | Originalni kod Original code |
| 50 cc | | | | | | | | |
| Diesis | MPC 159,00 kn | 01 | | 16 375 0250 | 16 375 0259 | 16 375 0252 | | 436864 |
| Fly 2 T. | MPC 149,00 kn | 04> | | 16 375 0060 | 16 375 0069 | | | 82712R-480852 |
| Fly 4 T | MPC 189,00 kn | 05-07 | | 16 375 0840 | | | | 842907 |
| Free-FL-FL2 | | 92-00 | | 16 375 0010 | 16 375 0019 | 16 375 0012 | | 430728 |
| Free-Delivery - Free-FL | MPC 179,00 kn | 00-02> | | 16 375 0250 | 16 375 0259 | 16 375 0252 | | 436864 |
| Liberty 4T | | 00-02 | | 16 375 0060 | 16 375 0069 | | | 480852-82712R |
| Liberty 4T Rst | | 04-06 | | 16 375 0060 | 16 375 0069 | | | 480852-82712R |
| Liberty 2T Rst | | 04 | | 16 375 0060 | 16 375 0069 | | | 82712R |
| Liberty Ptt Euro 2 | | 04-05 | | 16 375 0060 | 16 375 0069 | | | 82712R |
| Liberty | | 97-05 | | 16 375 0060 | 16 375 0069 | | | 82712R |
| Ntt | | 95-96 | | 16 375 0010 | 16 375 0019 | 16 375 0012 | | 430728 |
| Nrg | | 94-96 | | 16 375 0010 | 16 375 0019 | 16 375 0012 | | 430728 |
| Nrg Rst mc2 | | 96-97 | | 16 375 0010 | 16 375 0019 | 16 375 0012 | | 430728 |
| Nrg Rst mc2 | | 98 | | 16 375 0250 | 16 375 0259 | 16 375 0252 | | 436864 |
| Nrg Extreme | | 99-00 | | 16 375 0250 | 16 375 0259 | 16 375 0252 | | 436864 |
| Nrg Mc3 | | 01-04 | | 16 375 0250 | 16 375 0259 | 16 375 0252 | | 436864 |
| Nrg Purejet | | 02-04 | | 16 375 0250 | 16 375 0259 | 16 375 0252 | | 436864 |
| Nrg Power dd - Dt | | 05-06 | | 16 375 0250 | 16 375 0259 | 16 375 0252 | | 436864 |
| Nrg Power Purejet | | 04-06 | | 16 375 0850 | | | | 833982 |
| Quartz | MPC 119,00 kn | 92-96 | | 16 375 0040 | 16 375 0049 | 16 375 0042 | | 431190 |
| Sfera | | 91-93 | | 16 375 0030 | | | | 286175 |
| Sfera Maquillage 2 | | 94 | | 16 375 0040 | 16 375 0049 | 16 375 0042 | | 431190 |
| Sfera Rst | | 95-97 | | 16 375 0040 | 16 375 0049 | 16 375 0042 | | 431190 |
| Si/ Boss Variatore (Trapezoidale Monodentata) | | | | 16 375 0900 | | | | 430329 |
| Typhoon | | 01-06 | | 16 375 0250 | 16 375 0259 | 16 375 0252 | | 436864 |
| Vespa Et2 | | 4-98 | | 16 375 0040 | 16 375 0049 | 16 375 0042 | | 431190 |
| Vespa Et2 | MPC 189,00 kn | 05-98 | | 16 375 0050 | | 16 375 0052 | | 828223-82645R |
| Vespa Et2 Iniezione | | 97-00 | | 16 375 0050 | | 16 375 0052 | | 82645R-828223 |
| Vespa Lx 2T-4T | | 05 | | 16 375 0050 | | 16 375 0052 | | 82645R-828223 |
| Vespa Lxv 2 T | | 06 | | 16 375 0050 | | | | 82645R |
| Vespa Et4 | | 00-05 | | 16 375 0050 | | 16 375 0052 | | 82645R-828223 |
| Zip | | 92-94 | | 16 375 0030 | | | | 286175 |
| Zip | | 05-96 | | 16 375 0040 | 16 375 0049 | 16 375 0042 | | 431190 |
| Zip 4T. | | 00-06 | | 16 375 0050 | | 16 375 0052 | | 82645R |
| Zip Sp | | 96-00 | | 16 375 0040 | 16 375 0049 | 16 375 0042 | | 431190 |
| Zip Sp | | 01-04 | | 16 375 0050 | | 16 375 0052 | | 82645R |
| Zip Fast Raider | | 93-94 | | 16 375 0040 | 16 375 0049 | 16 375 0042 | | 431190 |
| Zip Rst | | 96-99 | | 16 375 0040 | 16 375 0049 | 16 375 0042 | | 431190 |
| Zip Fast Raider Rst - Zip e Zip B-Modale | | 94-97 | | 16 375 0040 | 16 375 0049 | 16 375 0042 | | 431190 |
| Zip | | 00-04 | | 16 375 0050 | | 16 375 0052 | | 82645R |
| 100cc | | | | | | | | |
| Diesis | | 01 | | 16 375 0370 | | | | ODNOOGO2606371 |
| Fly 4 T | | 06-07 | | | | 16 375 0860 | | |
| Free | | 02-03 | | | | 16 375 0860 | | 82619R-829484 |
| Zip 4t. | | 06 | | 16 375 0050 | | 16 375 0052 | | 82645R |
| 125cc | | | | | | | | |
| Beverly Rst | | 04-06 | | | | 16 375 0600 | | 829366 |
| Beverly | | 01-03 | | | | 16 375 0600 | | 842009 |
| Fly | MPC 249,00 kn | 05 | | | 16 375 0389 | 16 375 0380 | | 841213 |
| Hexagon Lx4 | | 98-99 | | | | 16 375 0260 | | 825059 |
| Hexagon Gtx | | 00 | | | 16 375 0389 | 16 375 0380 | | 841213 |
| Hexagon - Hexagon LX | | 94-99 | | | | 16 375 0200 | | 431258 |
| Liberty | | 98-00 | | 16 375 0260 | | | | 825059 |
| Liberty | | 00-02 | | | 16 375 0389 | 16 375 0380 | | 841213 |
| Liberty Rst | | 04-05 | | | 16 375 0389 | 16 375 0380 | | 841213 |
| Liberty Leader Rst Ptt | | 05-06 | | | 16 375 0389 | 16 375 0380 | | 841213 |



| Marka i model - Trademark model | | | DAYCO Originalni tip Original type | Linea Dayco Originalni tip Original type | DAYCO Racing Power Plus | RMS Originalni tip Original Type | Originalni kod Original code |
|--|---------------|-------|--|--|-------------------------------|--|---------------------------------|
| PIAGGIO SCOOTER 125 cc (nastavak) | | | | | | | |
| Skipper 1° serie | | | | | 16 375 0200 | | 431258 |
| Skipper Lx | MPC 269,00 kn | 98-99 | 16 375 0190 | | | | 434812 |
| Skipper 2° serie | | 94-97 | 16 375 0190 | | | | 434812 |
| Super Hexagon Gtx 12" | MPC 249,00 kn | 01-02 | | 16 375 0389 | 16 375 0380 | | 841213 |
| Skipper 4t. | | 00-02 | | 16 375 0389 | 16 375 0380 | | 841213 |
| Sfera | | 95-97 | 16 375 0070 | | | | 478547 |
| Vespa Granturismo | | 03-06 | | 16 375 0389 | 16 375 0380 | | 841213 |
| Vespa Lx | | 05 | | 16 375 0389 | 16 375 0380 | | 841213 |
| Vespa Et4 | | 99-02 | | 16 375 0389 | 16 375 0380 | | 841213 |
| Vespa Et4 | | 96-99 | 16 375 0070 | | | | 478547 |
| X8 | | 04-06 | | 16 375 0389 | 16 375 0380 | | 841213 |
| X9 - X9 Evolution | | 01-03 | | 16 375 0389 | 16 375 0380 | | 841213 |
| Zip | | 00-02 | | 16 375 0389 | 16 375 0380 | | 841213 |
| 150 cc | | | | | | | |
| Fly | | 05 | | 16 375 0389 | 16 375 0380 | | 841213 |
| Hexagon | | 94-97 | 16 375 0190 | | | | 434812 |
| Liberty | | 00-02 | | 16 375 0389 | 16 375 0380 | | 841213 |
| Skipper LX | | 98-99 | 16 375 0190 | | | | 434812 |
| Skipper 1° serie | | | | | 16 375 0200 | | 431258 |
| Skipper 2° serie | | 94-97 | 16 375 0190 | | | | 434812 |
| Skipper 4T. | | 00-02 | | 16 375 0389 | 16 375 0380 | | 841213 |
| Vespa Et4 | | 99-02 | | 16 375 0389 | 16 375 0380 | | 841213 |
| Vespa Lx | | 05 | | 16 375 0389 | 16 375 0380 | | 841213 |
| 180 cc | | | | | | | |
| Hexagon Gtx | MPC 469,00 kn | 00 | | 16 375 0669 | 16 375 0660 | | 840908 |
| Hexagon Lxt | | 98-99 | | | 16 375 0200 | | 484497 |
| Super Hexagon Gtx 12 | | 01-02 | | 16 375 0669 | 16 375 0660 | | 840908 |
| X9 Amalfi | | 00-03 | | 16 375 0669 | 16 375 0660 | | 840908 |
| 200 cc | | | | | | | |
| Beverly | | 01-03 | | | 16 375 0690 | | 842011 |
| Carnaby | | 07 | | | 16 375 0690 | | 842011 |
| Liberty Rst | | 04 | | 16 375 0669 | 16 375 0660 | | 840908 |
| Vespa Gran Turismo | | 03-06 | | 16 375 0669 | 16 375 0660 | | 840908 |
| X 8 | | 04-06 | | 16 375 0669 | 16 375 0660 | | 840908 |
| X 9 - X9 Evolution | | 02-03 | | 16 375 0669 | 16 375 0660 | | 840908 |
| 250 cc | | | | | | | |
| Beverly Euro 3 - Rst | | 04-06 | | | 16 375 0790 | | 841851 |
| Beverly Sport | | 06 | | | 16 375 0790 | | 841851 |
| Hexagon Gtx-Gt | | 98-00 | | | 16 375 0280 | | 495158 |
| X 8 | | 05-06 | | | 16 375 0810 | | 843963 |
| X 9 Evolution | | 04 | | | 16 375 0810 | | 843963 |
| X 9 | | 00-01 | | | 16 375 0780 | | 496304 |
| MP 3 | | 06-07 | | | 16 375 0810 | | 843963 |
| Vespa Gts | | 05-06 | | | 16 375 0810 | | 843963 |
| Vespa Gtv | | 06 | | | 16 375 0810 | | 843963 |
| 400 cc | | | | | | | |
| Beverly Euro 3 | MPC 659,00 kn | 06 | | | 16 375 0680 | | 832738 |
| X 8 | | 06 | | | 16 375 0680 | | 832738 |
| MP 3 | | 06-07 | | | 16 375 0680 | | 832738 |
| 500 cc | | | | | | | |
| Beverly - Beverly Euro 3 | | 02-06 | | | 16 375 0680 | | 832738 |
| X 9 Evolution - ABS | | 03-07 | | | 16 375 0680 | | 832738 |
| X 9 Evolution | | 03-04 | | | 16 375 0680 | | 832738 |
| X 9 | | 00-02 | | | 16 375 0760 | | 827826 |
| MP 3 | | 06-07 | | | 16 375 0680 | | 832738 |
| PGO | | | | | | | |
| 50 cc | | | | | | | |
| Motore Morini | | | 16 375 0170 | | | | |



| Marka i model - Trademark model | DAYCO Originalni tip Original type | Linea Dayco Originalni tip Original type | DAYCO Racing Power Plus | RMS Originalni tip Original Type | Originalni kod Original code |
|---|--|--|-------------------------------|--|---------------------------------|
| SUZUKI | | | | | |
| 50 cc | | | | | |
| Ajzz Sepia S - Tune | 16 375 0220 | | | | 2760125E00 |
| Uxw Zillion - Trs Street Magic - Ay Ayw Katanav-y 97-00 | 16 375 0320 | | | | 27601-06F01 |
| Ay Ayw K1-K4 MPC 179,00 kn 01-04 | 16 375 0320 | | | | 27601-06F01 |
| Katana V.Y 98.Ayw K1-K3 01-03 | 16 375 0350 | | | | 2760110E0010 |
| 125-150 cc | | | | | |
| Epicuro 99-01 | | | 16 375 0480 | | 2760121F0000 |
| 250 cc | | | | | |
| Burgman 98-06 | | | 16 375 0700 | | 2760114F11000 |
| 400 cc | | | | | |
| Burgman 99-06 | | | 16 375 0710 | | 2760115F10000 |
| Burgman K 7 07 | | | 16 375 0830 | | 27601-05M00 |
| YAMAHA | | | | | |
| 50 cc | | | | | |
| Aerox - Euro 2 - Aerox R 99-06 | 16 375 0080 | 16 375 0089 | 16 375 0082 | 16 375 0081 | 5RNE76410000 |
| Yar Axis 95-96 | 16 375 0110 | | | | 3VA176410000 |
| Bw's R - Bw's Next Generation 97-06 | 16 375 0080 | 16 375 0089 | 16 375 0082 | 16 375 0081 | 5RNE76410000 |
| Bw's Naked 03-04 | 16 375 0080 | 16 375 0089 | 16 375 0082 | 16 375 0081 | 5RNE76410000 |
| Bw's Original Euro 2 - Bw's Original 97-03 | 16 375 0080 | 16 375 0089 | 16 375 0082 | 16 375 0081 | 5RNE76410000 |
| Bw's Next Generation Cat 99-00 | 16 375 0080 | 16 375 0089 | 16 375 0082 | 16 375 0081 | 5RNE76410000 |
| Bw's - Bw's Bump MPC 119,00 kn 97-06 | 16 375 0080 | 16 375 0089 | 16 375 0082 | 16 375 0081 | 5RNE76410000 |
| CWL Bw's 03-04 | 16 375 0080 | 16 375 0089 | 16 375 0082 | 16 375 0081 | 5RNE76410000 |
| Cw Sp Bw's Original Euro 2 - Cw Bw's Original Euro 2 02 | 16 375 0080 | 16 375 0089 | 16 375 0082 | 16 375 0081 | 5RNE76410000 |
| Ym Breeze - Crz 91-95 | 16 375 0110 | | | | 3VP17641000 |
| Cts - Ctss 90-95 | 16 375 0090 | | | 16 375 0091 | 23Y176410000 |
| Cs Jog R - Cs Jog R Euro 2 02-06 | 16 375 0080 | 16 375 0089 | 16 375 0082 | 16 375 0081 | 5RNE76410000 |
| Yaza Jog Z 95-96 | 16 375 0410 | | | | 3GF176410000 |
| Neo's 97-06 | 16 375 0080 | 16 375 0089 | 16 375 0082 | 16 375 0081 | 5RNE76410000 |
| Neo's Euro 2 02-03 | 16 375 0080 | 16 375 0089 | 16 375 0082 | 16 375 0081 | 5RNE76410000 |
| Slider - Spy - Why - Why Euro 2 - Why Euro 1 00-06 | 16 375 0080 | 16 375 0089 | 16 375 0082 | 16 375 0081 | 5RNE76410000 |
| 100 cc | | | | | |
| Ya Aerox - Bw's - Yn Neo's 99-02 | 16 375 0620 | | | | 4VP176410000 |
| 125 cc | | | | | |
| Nxcc Cygnus 04-07 | | | 16 375 0870 | | |
| Xc Beluga 90-95 | 16 375 0090 | | | 16 375 0091 | 5DW176410000 |
| Xc Cygnus-Cygnus R. 95-03 | 16 375 0530 | | | | 4CW176410000 |
| Y Prx-Max - YP RX Max 06-07 | | | 16 375 0800 | | 1B9E76410000 |
| YPE Mayesty 03-06 | | | 16 375 0300 | | 5NSE76410000 |
| 125-150 cc | | | | | |
| Flyone - Flyone R. 150 90-98 | | | 16 375 0400 | | 3UH176410000 |
| Maxster - Majesty - Teo's 00-02 | | | 16 375 0300 | | 5DS176410000 |
| 180 cc | | | | | |
| Majesty MPC 339,00 kn 03-06 | | | 16 375 0570 | | 5XME76410000 |
| 250cc | | | | | |
| Majesty- Abs-Dx MPC 409,00 kn 96-03 | | 16 375 0659 | 16 375 0650 | | 5CG176410000 |
| Xprx-Max 05-06 | | | 16 375 0560 | | 5SEE76410000 |
| 300 cc | | | | | |
| Xc Versity 03-06 | | | 16 375 0560 | | 5SEE76410000 |
| 400 cc | | | | | |
| Yp Majesty 04-06 | | | 16 375 0770 | | 5RU176410000 |
| 500 cc | | | | | |
| Xp T Max - T Max abs - Black Max 01-06 | | | 16 375 0740 | | 5VU176410000 |



| Marka i model - Trademark model | Originalni tip Original type | Linea Dayco | | Originalni kod Original code |
|--|---------------------------------|---------------------------------|---------------------------------|---------------------------------|
| | | Originalni tip Original type | Originalni tip Original type | |
| DERBI: Hunter 50 | | 16 377 0050 | | |
| GILERA: Dna-Easy Moving-Ice-Runner-Poggiali-FL-Purejet-Storm-Stalker-Typhoon-X-Xr 50 MPC 45,00 kn | | 16 377 0010 | 16 377 0019 | 286162 |
| PIAGGIO: Free Delivery 00/01-Ntt 95/96-Nrg 94/96-Diesis 01-Free 92/94-FL 95/00 50 Liberty 97/02-Rst Mc2 96/98-Mc3 01/02-Nr g Extreme 99/00-Purejet 02 Quartz 92/96-Fly 2T-Sfera Maquill. 2 94-Sfera base 91/93-Typhoon 01-Vespa Et2 97/01 Zip 00-Base 92/96-Rst 96/99-Zip Fast Raider 93/94-Zip Sp 96/02 Eur o 1 | | | | |
| GILERA: Typhoon-X-Xr-Runner Fx-Fxr 125-180 MPC 49,00 kn | | 16 377 0020 | | 431370 |
| PIAGGIO: Hexagon 125-150-Lx-Lxt 125-180 - Skipper-Lx 125-150-Skr City 80 | | | | |
| PIAGGIO: Vespa Et2 iniezione 50 | | 16 377 0030 | | 480341 |
| CINGHIE INIETTORE SCOOTER - INJECTION REMENI SCOOTER | | | | |
| PIAGGIO: Vespa Et2 iniezione 5/98> 50 | | 16 377 0040 | | 480135 |
| CINGHIE DISTRIBUZIONE - REMENI DISTRIBUCIJE | | | | |
| DUCATI: | | | | |
| Monster 00/04 400 | | 16 377 0060 | | 73710051A |
| Monster 01 600 | | | | 73740072A |
| Monster IE 02/03 620 | | | | 73740072A |
| Sport 03 - Monster 04 620 | | | | |
| Biposto 98/99 748 | | 16 377 0090 | | 73710031A |
| SPS - Racing 98/99 748 | | | | 73740111B |
| Racing - B. Posto U.S.A. 98/00 - S 748 | | | | |
| Super Sport IE - Monster - Sport - Monster IE 01/02 750 | | 16 377 0060 | | 73740072A |
| Monster - Sport - Super Sport 03/04\ 800 | | | | |
| Super Bike Biposto 91/92 851 | | 16 377 0090 | | 73710031A |
| Monster - Super Sport - Super Light U.S.A. 91/99 900 | | 16 377 0070 | | 73740021A |
| 907 IE - 907 IE U.S.A. - Super Sport F.E.- Monster cromo special 90/98 900 | | | | |
| Super Sport U.S.A. - Monster U.S.A. - Super Sport IE 98/00 900 | | | | |
| Monster City - City Dark - Super Sport CR U.S.A. - Monster IE 99/00 900 | | | | |
| Sport Touring 2 97/00 944 | | | | |
| 916 Biposto Senna 98 996 | | 16 377 0090 | | 73710031A |
| 916 Racing 98 996 | | | | 73740111B |
| 916 Sps 97/98 996 | | | | |
| 996 - Sps - Sps III° 99/00 996 | | | | |
| Racing Special USA - USA 99 996 | | | | |
| R-II 01 996-996 | | 16 377 0080 | | 73740123A |
| CINGHIE PIAGGIO APE - V-BELTS APE | | | | |
| PIAGGIO - DINAMO Ape Poker-Diesel-Benzina | | 16 373 0010 | | 288724 |
| Ape Car P2-P3 78/85-Mp P501-P601 78/96-Tm P602 82/83-Tm P703-P703V-FL2 84/01 | 16 373 0021 | | | 113256 |
| CINGHIE TRASMISSIONE CICLOMOTORE PIAGGIO -V-BELTS MOPED | | | | |
| Ciao monomarcia Mix Teen-Px FL Kat | 16 373 0071 | | | 102905 |
| Si--Si-FL2-Mix-Boss-Boxer-monomarcia | 16 373 0041 | 16 375 0910 | | 124593 |
| Si-Boss-Boxer con variatore | 16 373 0031 | 16 375 0900 | | 130329 |
| Bravo mono | 16 373 0061 | | | 130938 |
| Bravo con variatore | 16 373 0051 | | | 130937 |
| Bravo mono per puleggia R 70 | 16 373 0099 | | | |
| Bravo mono per puleggia R 70 | 16 375 0451 | | | |
| ■ Monodentate | | | | |